

FleetReach™

Fleet and Asset Management

FleetReach™ is a comprehensive web based vehicle and asset management solution capable of tracking unlimited number of vehicles and assets.

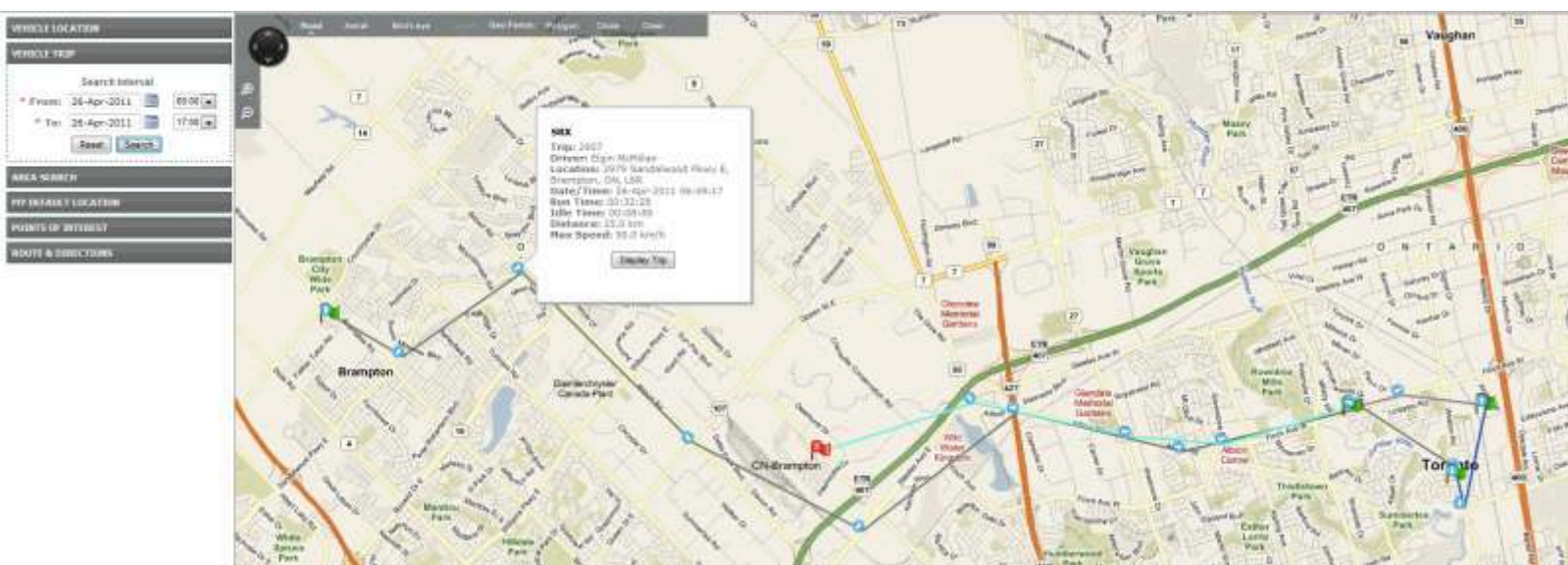
Based on our experience of managing some of the largest fleets in North America, FleetReach™ uses the latest in software technology to provide you with easy and quick access to the information you need.

FleetReach™ is integrated with several cellular, satellite and dual mode (cellular/satellite) GPS devices to provide you with instant information of all your assets for location, engine hours and geo-fence breaches.



FleetReach™ Benefits

- ✓ Reduce vehicle and asset ownership cost
- ✓ Conduct preventive maintenance
- ✓ Assist dispatch operations
- ✓ Reduce risks of theft and misuse
- ✓ Reduce idling and fuel consumption
- ✓ Track drivers and vehicles



GPS Tracking & Anti-Idling Solutions

AV3000 NX



AV3000 NX is our latest generation of telematics devices. For users who want more than just GPS Tracking the AV3000 NX provides all necessary information from the vehicle in real time. It connects to the Engine Bus through OBDII / CAN providing vehicle data like Odometer Reading, Speed, Idling, Engine Temperature and Air Flow. The AV3000 NX is manufactured in Canada and is currently being used by some of the largest Fleets in North America.

AV1000



The AV1000 is the first truly affordable tracking solution. Not only is it attractively priced, it is also easy to install and maintain thus eliminating expensive installs and troubleshooting.

With the AV1000 you can locate your vehicle anytime, create geo-fences, get alerted through text / email when a geo-fence is broken, receive maintenance alerts and get access to multiple, online, user configurable reports.

SkyWave



The SkyWave Satellite based product line is ideally suited for tracking your vehicles and assets in remote locations where cellular coverage is not available or is unreliable. AutoVision offers both the satellite only and the satellite / cellular dual mode products. The dual mode product operates on cellular network and switches to satellite only when the cell network is not available. This ensures that your vehicle is tracked at all times while minimizing airtime costs.

StopIdle



StopIdle shuts down the vehicle engine when the idling exceeds a pre-set limit and restarts it to ensure optimal cabin temperature and battery voltage. StopIdle is extremely versatile and can adapt to various customer requirements. All parameters like allowable idling time, optimal cabin temperature and battery voltage can be programmed by the end user.

